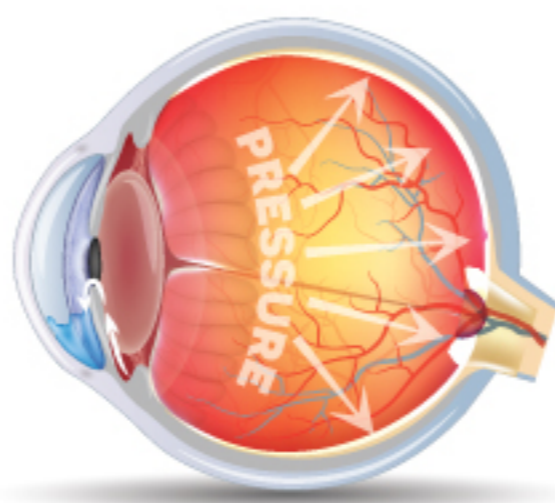


# GLAUCOMA

Glaucoma damages the optic nerve, causing **increased intraocular pressure** (IOP)

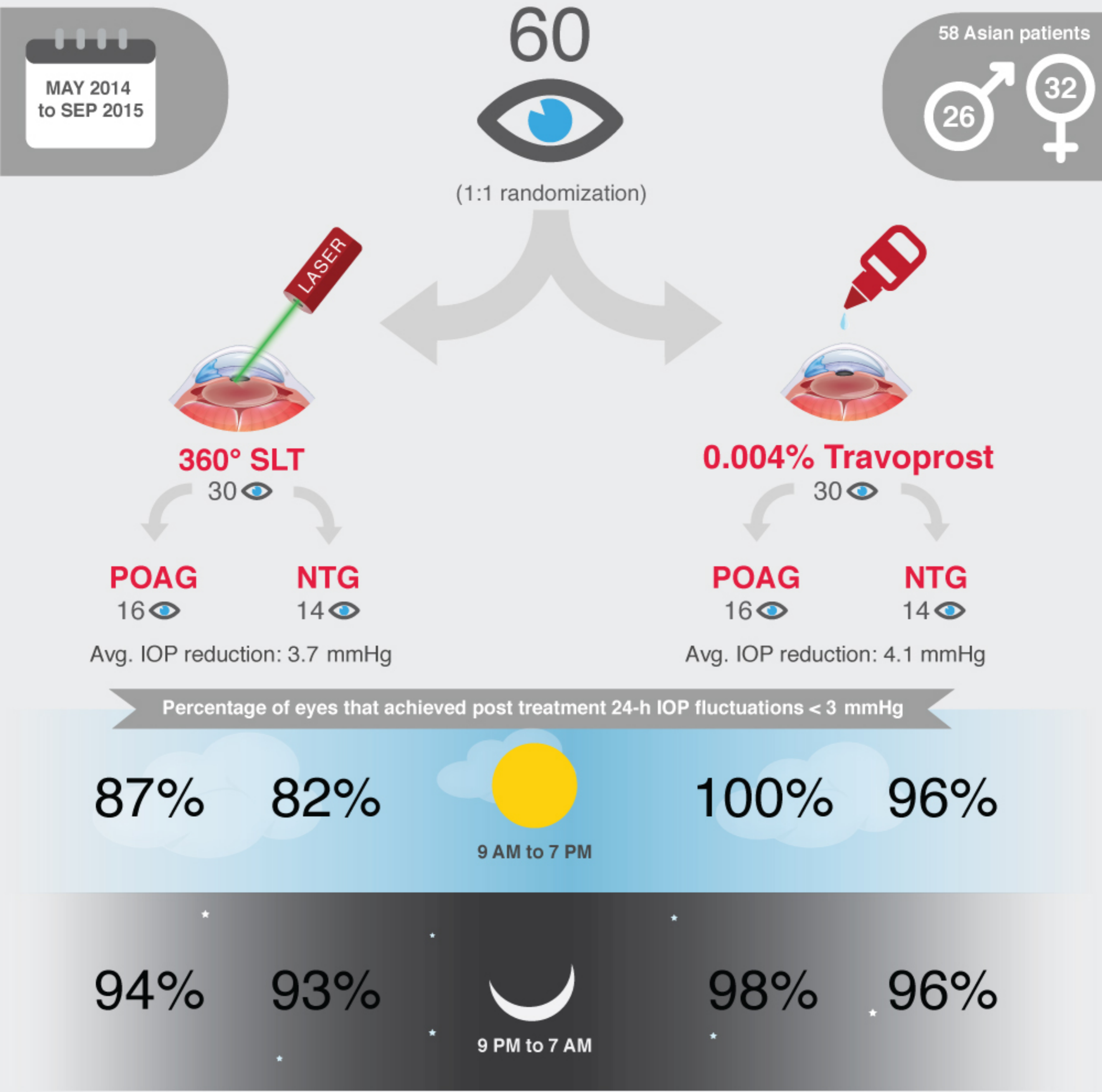
Fluctuation of IOP is a possible **risk factor** for glaucoma progression



Common types are **primary open-angle glaucoma** (POAG) and **normal-tension glaucoma** (NTG)

## How effective are 360° SLT and 0.004% travoprost in reducing 24-h circadian IOP?

Comparative study between patients with POAG and NTG



### SECONDARY OUTCOME MEASURES



Both SLT and travoprost achieved IOP fluctuations < 3mmHg during the night time

**Travoprost controls diurnal IOP fluctuations more effectively than SLT**